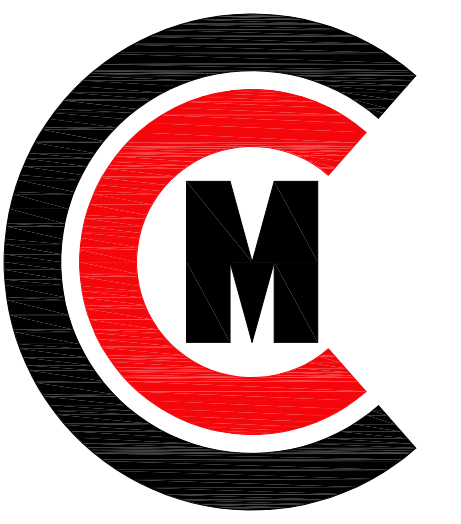


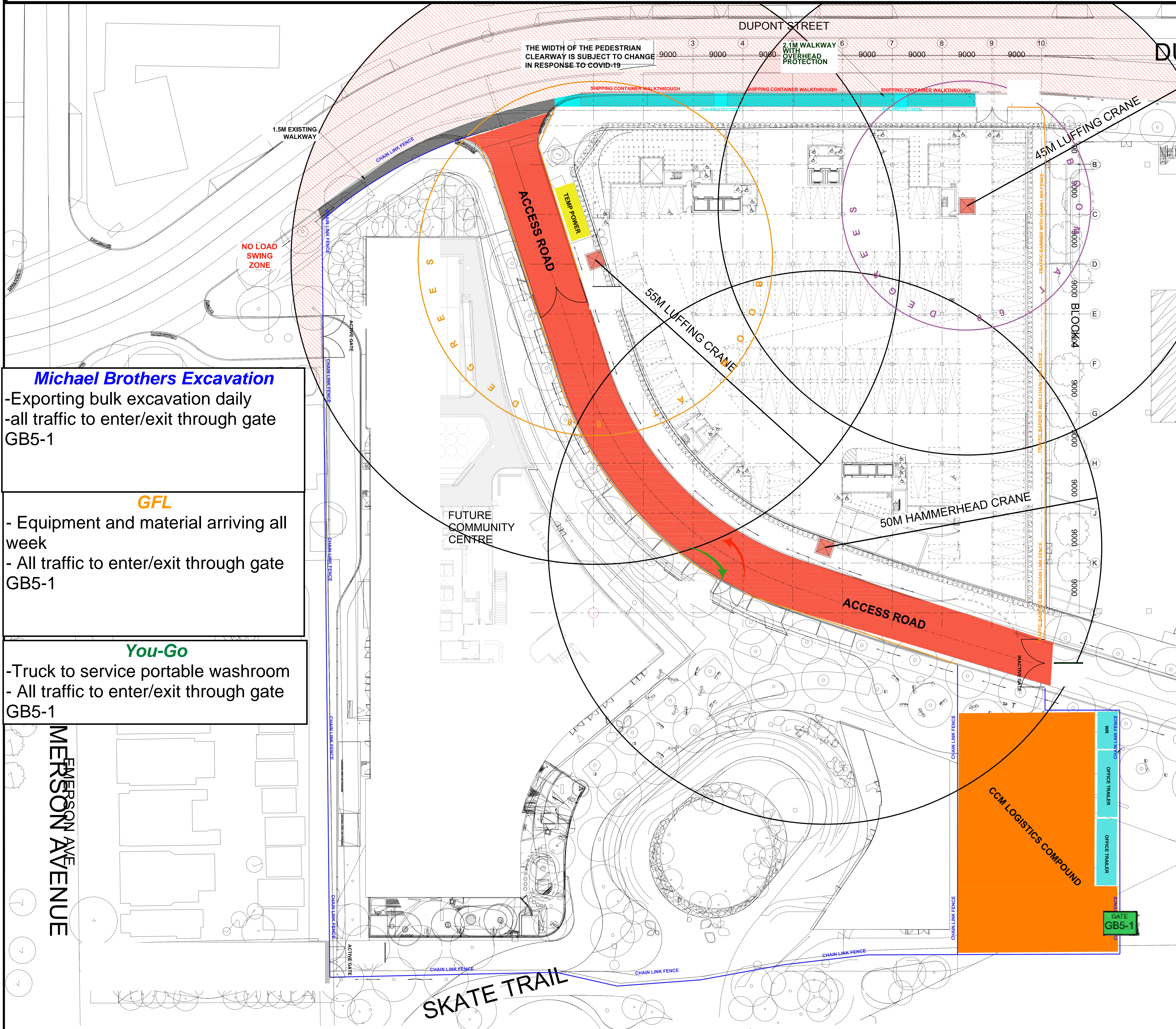
Emergency Contacts
 Shawn Millican General Superintendent 647-296-1535
 Dan Stevens Superintendent 647-261-3171
 Connor Rogers Field Engineer 647-242-9599
 Marco Ferreira Safeline Safety Consultant Representative 647-299-6200

GALLERIA BLOCK 5 - TRAFFIC PLAN

March 22, 2021 - March 27, 2021



THIS DRAWING IS FOR THE SOLE USE OF ANY CCM OPERATING COMPANY, OR ANY CCM JOINT VENTURE COMPANY. IT IS NOT TO BE USED, ALTERED OR REPRODUCED WITHOUT THE WRITTEN PERMISSION OF CLARK CONSTRUCTION MANAGEMENT INC.



Michael Brothers Excavation
 -Exporting bulk excavation daily
 -all traffic to enter/exit through gate GB5-1

GFL
 - Equipment and material arriving all week
 - All traffic to enter/exit through gate GB5-1

You-Go
 -Truck to service portable washroom
 - All traffic to enter/exit through gate GB5-1

General Site Safety
****All Visitors Must Sign In****
 -Minimum PPE required on site includes;
 -Safety eyewear
 -safety boots
 -hard hat
 -safety vests / or high vis shirts
 -gloves on your person
 -Minimum 1 documented crew talk prior to the start of each work day
 -Minimum 1 weekly tool box talk
 -All workers must be oriented prior to starting on site. It is the foreman/supervisors responsibility to ensure all workers are orientated to be arranged through a CCM site representative
 -All workers to review and abide by the Project specific safety plan including, Owner Safety Plan, company safety plans, and MOL construction regulations

General Delivery Notes
 -All Deliveries to be scheduled on a daily basis through CCM the day prior.
LOGISTICS COORDINATOR - TBD
 -Unscheduled deliveries may be turned away by a CCM site representative
 -All reversing vehicles require a flag person at all times on and off the project site
 -1 Flag person required for each lane of traffic per MOL construction regulations
 -All Flag persons require traffic control certification and or training
-All delivery drivers require PPE. Delivery drivers walking site without PPE will be removed
 -Traffic flow on the adjacent streets must be maintained at all times. Temporary stoppages for reversing vehicles into the site only

